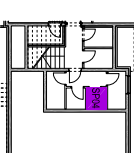
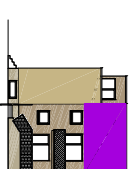
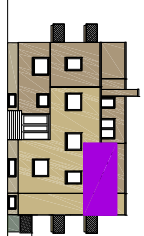
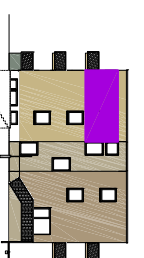


SJEVERNO PROČELJE
TLOCRT PODRUMA



ISTOČNO PROČELJE

ZAPADNO PROČELJE



1	HODNIK	parket	4,04m ²
2	KH. BL. I DB	parket	12,34m ²
3	SOBA	parket	7,24m ²
4	KUPAONA	ker. pločice	4,99m ²
5	BALKON	ker. pločice	2,55m ²
6	TERASA	ker. pločice	12,37x0,25= 3,09m ²

POVRŠINA STANA **33,65m²**

SP. br. 04 **1,78x0,50=0,89m²**

PM. br. 03 **12,00x0,20=2,40m²**

POVRŠINA UKUPNO **36,94m²**



STAN TIP: JEDNOSOBNI (1S)

ETAŽA: DRUGI KAT

STAN br: 03.01.