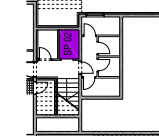


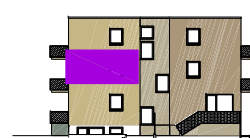
SJEVERNO PROČELJE



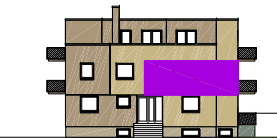
TLOCRT PODRUMA



ISTOČNO PROČELJE



ZAPADNO PROČELJE



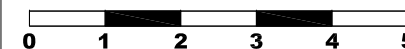
1	HODNIK	parket	4,34 m ²
2	DB. I BLAG.	parket	16,09 m ²
3	KUHINJA	ker. pločice	3,84 m ²
4	SOBA	parket	10,15 m ²
5	SOBA	parket	8,52 m ²
5	KUPAONA	ker. pločice	4,39 m ²
6	BALKON	ker. pločice 5,10x0,50=	2,55 m ²

POVRŠINA STANA 49,88m²

SP. br. 02 2,47x0,50=1,24 m²

PM. br. 04 11,50x0,20=2,30 m²

POVRŠINA UKUPNO 53,42m²



M 1:100

STAN TIP: TROSOBNI (3S)

ETAŽA: PRVI KAT

STAN br: 02.01.