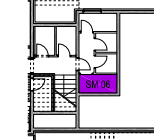
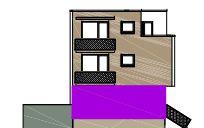


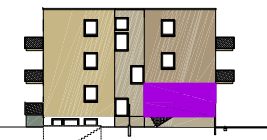
JUŽNO PROČELJE

TLOCRT PODRUMA



ISTOČNO PROČELJE

ZAPADNO PROČELJE



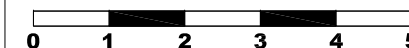
1	HODNIK	parket		3,73m ²
2	DB. I BLAG.	parket		16,09m ²
3	KUHINJA	ker. pločice		3,84m ²
4	SOBA	parket		13,28m ²
5	KUPAONA	ker. pločice		4,54m ²
6	BALKON	ker.pločice	5,40x0,50=	2,70 m ²
7	STEPENICE	ker.pločice	2,02x0,25=	0,51 m ²
8	VRT		32,26x0,10=	3,23m ²

POVRŠINA STANA 47,91m²

SP. br. 06 3,00x0,50=1,50m²

PM. br. 06 11,50x0,20=2,30m²

POVRŠINA UKUPNO 51,71m²



M 1:100

STAN TIP: DVOSOBNI (2S)

ETAŽA: V. PRIZEMLJE

STAN br: 01.02.