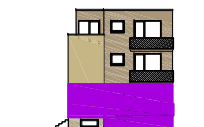
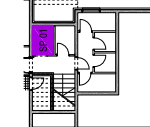


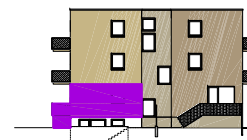
SJEVERNO PROČELJE



TLOCRT PODRUMA



ISTOČNO PROČELJE



ZAPADNO PROČELJE



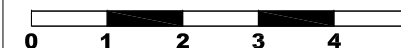
1	HODNIK	parket	4,04 m ²
2	DB. I BLAG.	parket	16,09 m ²
3	KUHINJA	ker. pločice	3,84 m ²
4	SOBA	parket	13,16 m ²
5	KUPAONA	ker. pločice	4,39 m ²
6	BALKON	ker. pločice 5,40x0,50=	2,70 m ²
7	STEPENICE	ker. pločice 2,70x0,25=	0,68 m ²
8	VRT	ker. pločice 48,43x0,10=	4,84 m ²

POVRŠINA STANA 49,74 m²

SP. br. 01 2,57x0,50=1,29 m²

PM. br. 02 11,98x0,20=2,40 m²

POVRŠINA UKUPNO 53,43 m²



M 1:100

STAN TIP: DVOSOBNI (2S)

ETAŽA: V. PRIZEMLJE

STAN br: 01.01.